

X-RAY SCANNER

For a safer world

90 kV



The Spectrum 5333 is designed for offices, factories, educational centres, transport stations, banks, shopping centres and other places where smaller bags and packages need to be checked, contact free but quickly and efficiently. It can be used on a desk top, stand or freestanding. Smallest footprint on the market of scanners, the Spectrum 5333 is an ideal solution for confined and restricted areas.

X-RAY SCANNER

TECHNICAL SPECIFICATIONS

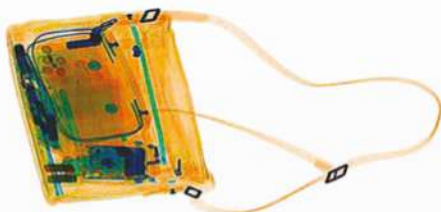
HIGH TECH

- High image quality with a wire resolution of 40 AWG and steel penetration of 12 mm.
- Meets all the international standards for health and safety of operators and members of the public.



Excellent image quality. Organic materials shown in orange, metal in blue and a mix of them in green.

- Drugs and explosives automatic detection and alarm.
- Random projection of images containing fictitious threat objects for operator skills training (TIP function).
- Continuous or region zoom functions for easy and precise evaluation of the image.
- Can export images in commercial file formats (JPEG, TIFF and BMP) onto a USB device.



Drug detection

- Ergonomic keyboard and simple operator interface provide efficiency and ease for the operator.
- Hardware and software customized to meet customer requirements.

GENERAL SPECIFICATIONS

• Tunnel Size	530mm (W) / 335mm (H)
• Conveyor Speed	0,24m/s (configurable)
• Conveyor Height	231mm
• Max Load	100kg
• Standard Generator.....	90kV (configurable)
• Wire Resolution*	40AWG
• Steel Penetration*	12mm
• Display Monitor	1 LED, color, high-resolution (configurable size)
• Cooling	Insulating oil with forced air cooling
• Beam direction	Diagonally downward

STANDARD FEATURES

- Automatic color coding of materials with different atomic numbers.
- Image auto save
- Baggage Counter
- Continuous scanning
- Zoom higher than 128x
- Colored or black/white image
- Edge enhancement
- Threat image projection (TIP)
- High density alert
- High penetration function
- Sharpness enhancement
- Image export to JPEG, TIFF and BMP
- Export to a secure VMI encrypted viewing application
- Network connection
- Scanning in real time
- Bidirectional inspection
- Self diagnostic system
- Color Inversion
- Image manipulation in real time
- Automatic detection algorithm for drugs, explosives and high density materials
- Storage capacity above 200,000 images

SECURITY

- Shield..... Dose lower than 1uSv/h at 0.1m away from the equipment

OPTIONAL FUNCTIONS AND ACCESSORIES

- Customized painting
- Training Software
- Local language
- Remote workstation software (Spectrum Ativa)
- Standard ASTM or STP test piece
- Modular roller table
- Anti-theft operation console with key
- Uninterruptible Power Supply
- Elevated base
- Tunnel extension
- Touch screen monitor
- Ability to integrate with conveyor system
- WiFi capability
- Integration with Garrett's walk-through metal detector portals



GENERAL INFORMATION

• Dimensions	1183mm (L) / 803mm (W) / 880mm (H)
• Weight	150kg
• Operating Temperature/ Humidity	0°C - 40°C / 5% ~ 95% (non-condensing)
• Storage Temperature/ Humidity.....	-40°C ~ 60°C / 5% ~ 95% (non-condensing)
• Power Supply	127Vac / 220Vac / 230Vac (-15% a +10%); 50Hz/60Hz, +/-3Hz
• Power Consumption	400VA

"Technical Specifications subject to change without notice."

CICRA CONSULTANCIES - Local Partner

Unit 904A, Seventh Floor, Unity Plaza, No. 02, Galle Road, Colombo 04, Sri Lanka
 Mobile: (+94) 761 384 338 | Telephone: (+94) 112 556 741 | Fax: (+94) 718800871
 Email: anjela@cicra.lk | Web: <http://www.cicra.lk>

